

CONTACT INFORMATION

NAME OF MUNICIPALITY  
ENGINEERING DEPT. -BEN O'DOWD, PE 229-259-3530  
UTILITIES DEPT. JASON BARNES 229-259-3592

LEA  
CIVIL DESIGNER - MACK DAVIS, EIT  
PROJECT ENGINEER - CLAYTON MILLIGAN, PE  
PRINCIPAL-IN-CHARGE - JEFF LOVELL, PE

24-HOUR CONTACT  
NAME  
TITLE  
ADDRESS  
PHONE #

CONTRACTOR SHALL SCHEDULE AN  
EROSION CONTROL INSPECTION WITH THE  
DESIGN PROFESSIONAL WITHIN 7 DAYS OF  
BEGINNING CONSTRUCTION.

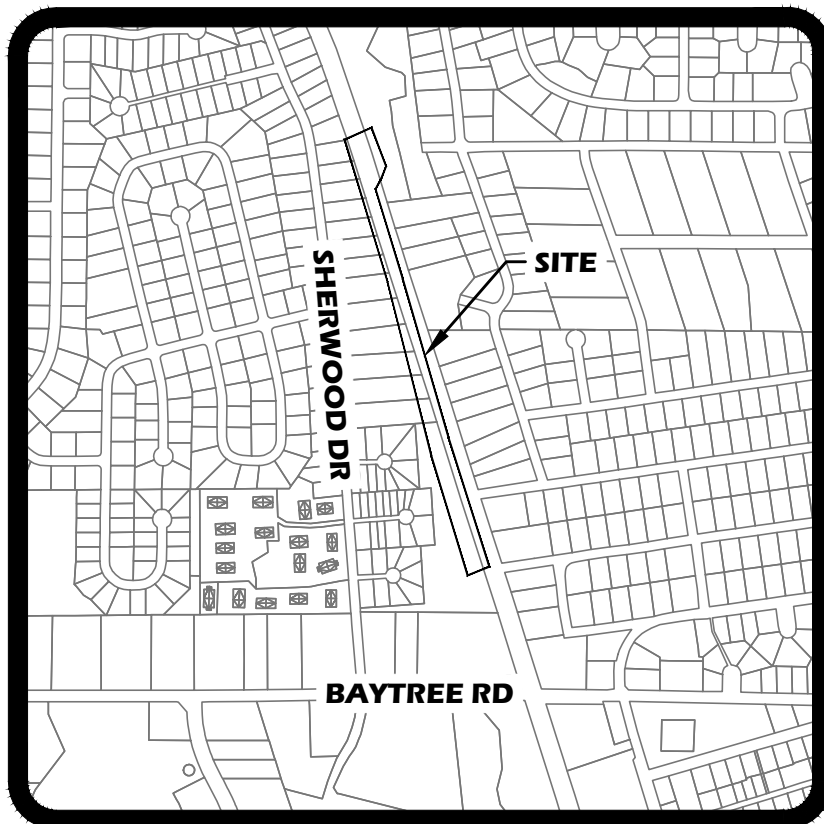
NOT FOR CONSTRUCTION UNLESS SIGNED BY CITY  
ENGINEER OR AUTHORIZED REPRESENTATIVE.

SIGNED \_\_\_\_\_  
DATE \_\_\_\_\_

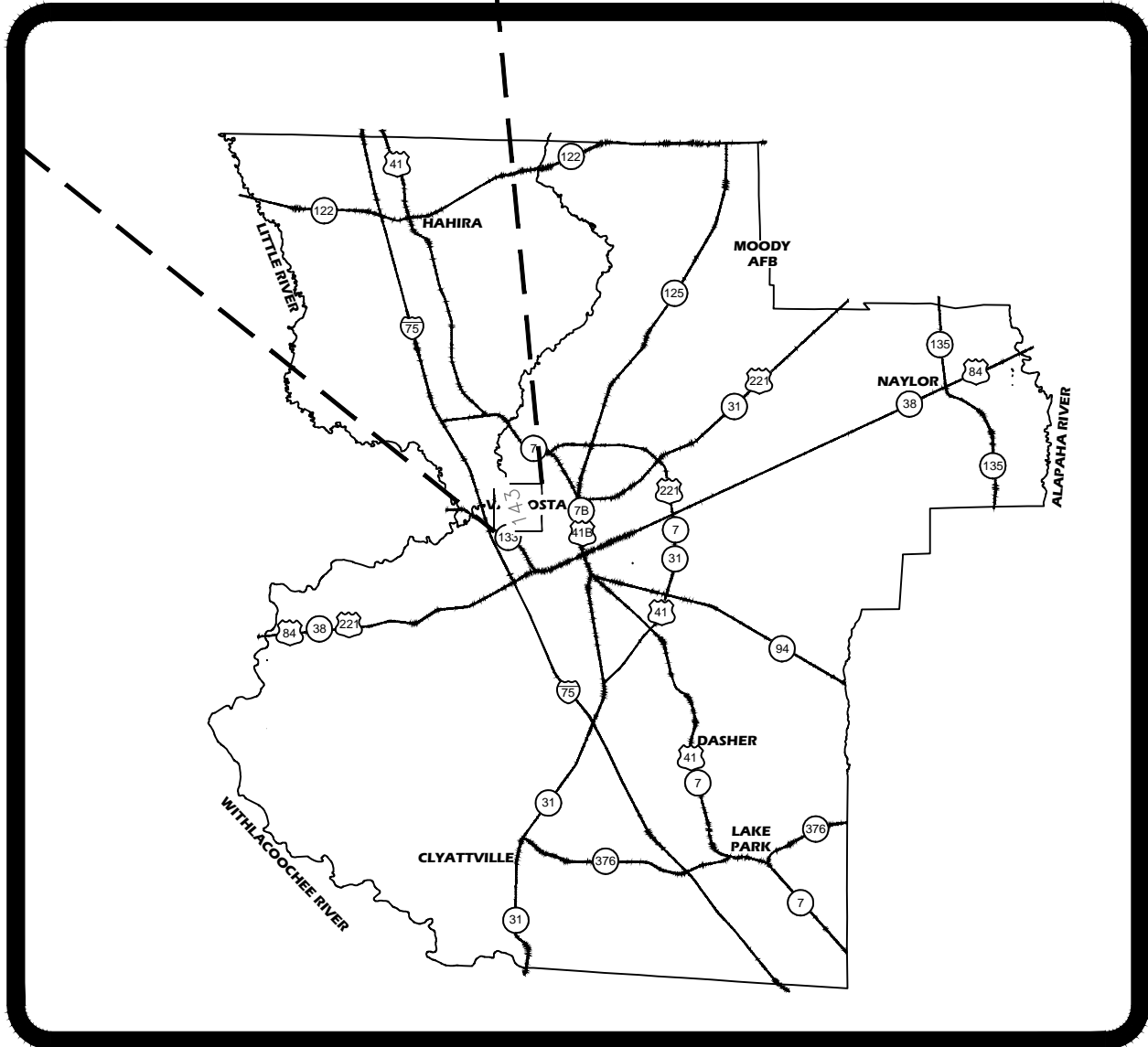
SUGAR CREEK  
SEWER REPAIR

FOR  
VALDOSTA  
A City Without Limits

LEA PROJECT NUMBER 0026-50  
SUBMITTAL DATE: DATE 10, 2025  
VALDOSTA, GEORGIA



1" = 1000'



LOCATION MAP  
N.T.S.

DRAWING INDEX

SHEET	DESCRIPTION
C-1	COVER
C-2	EXISTING CONDITIONS/DEMO PLAN
C-3	PLAN & PROFILE
C-4	UTILITY DETAILS



GA CORP# 0419099  
FL CORP# F04000002135  
P.O. Box 2830  
3998 Inner Perimeter Road  
Valdosta, GA 31604  
Telephone: 229-253-0900  
Fax: 229-253-1842  
E-mail: lea@lea-pc.com

SUGAR CREEK  
SEWER REPAIR

LAND LOTS 14 OF THE  
11TH LAND DISTRICT  
LOWNDES COUNTY - STATE  
OF GEORGIA

REVISIONS  
DATE DESCRIPTION



Know what's below.  
Call before you dig.

IF YOU DIG GEORGIA...  
CALL US FIRST!

UTILITIES PROTECTION CENTER  
IT'S THE LAW  
www.gaupc.com

SCALE: N.T.S.

DESIGNED BY: MJD

CHECKED BY: MCM

SUBMITTAL DATE: 03/10/2025

JOB NO. 0026-50

THESE DRAWINGS ARE THE PROPERTY OF THE  
ENGINEER AND MAY NOT BE REPRODUCED OR  
REUSED WITHOUT PERMISSION AND CREDIT.  
© LEA 2025

COVER

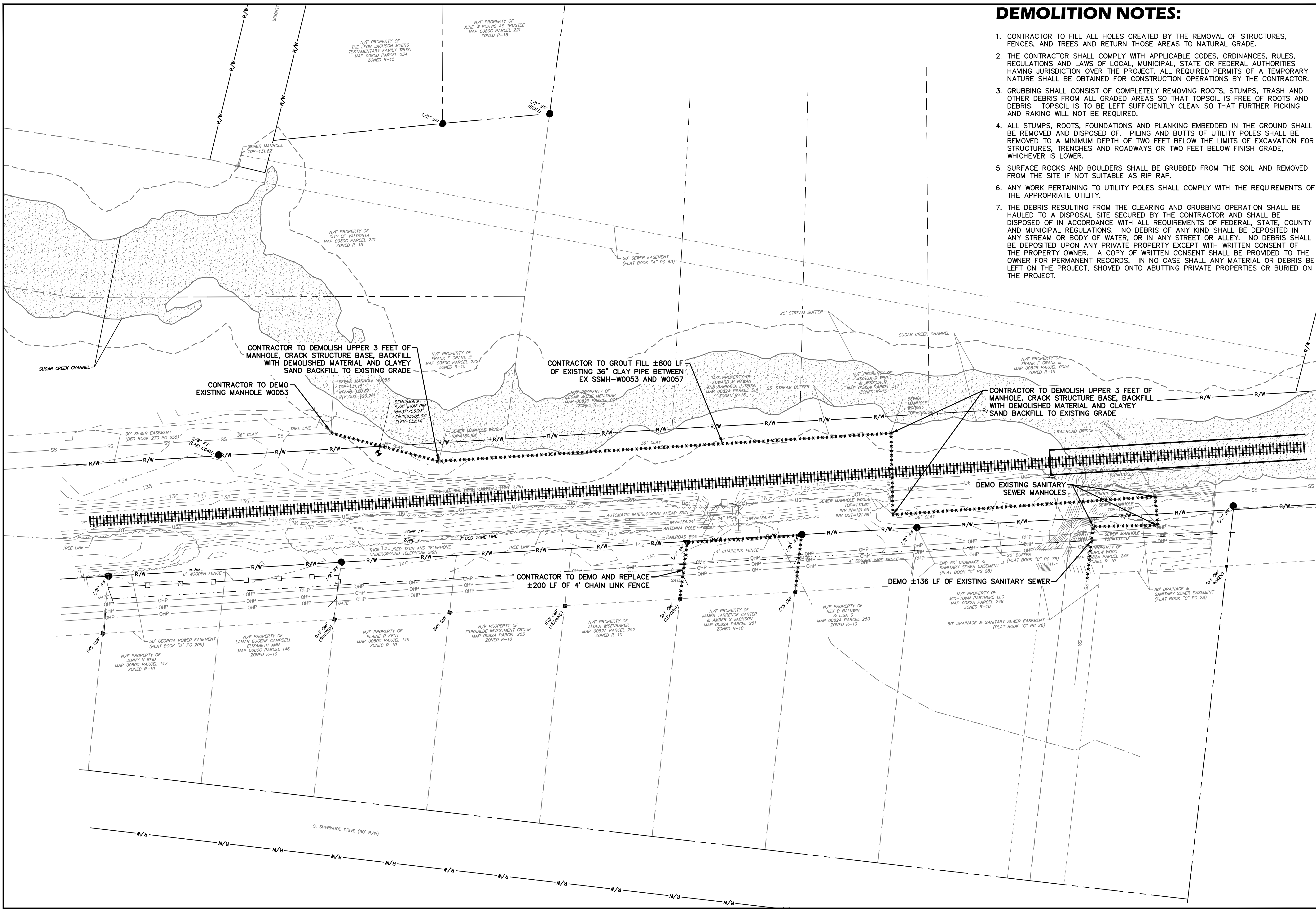
C-1

1 OF 4 SHEETS

LEGEND

	EXISTING	PROPOSED
GAS LINE	— GAS —	— GAS —
WATER LINE	— W —	— W —
SEWER LINE	— SS —	— SS —
FORCE MAIN	— FM —	— FM —
OVERHEAD POWER	— OHP —	— OHP —
UNDERGROUND POWER	— UGP —	— UGP —
UNDERGROUND CABLE	— —	— —
CONTOUR	— 100 —	— 100 —
RIGHT-OF-WAY LINE	— R/W —	— R/W —
STORM PIPE	— —	— —
PROPERTY LINE	— —	— —
EASEMENT	— —	— —
FENCE	— X —	— X —
SPOT ELEV.	— —	— —
FLOW ARROW	— —	— —
FIRE HYDRANT	— —	— —
WATER VALVE	— —	— —
WATER FIRE DEPARTMENT	— —	— —
WATER METER	— —	— —
WATER SERVICE	— —	— —
CLEANOUT	— —	— —
SEWER MANHOLE	— —	— —
STORM CATCHBASIN	— —	— —
STORM GRATE INLET	— —	— —
STORM HEADWALL	— —	— —
FLARED END SECTION	— —	— —
UTILITY POLE	— —	— —
GAS VALVE	— —	— —
MAILBOX	— —	— —





DEMOLITION NOTES:

1. CONTRACTOR TO FILL ALL HOLES CREATED BY THE REMOVAL OF STRUCTURES, FENCES, AND TREES AND RETURN THOSE AREAS TO NATURAL GRADE.
2. THE CONTRACTOR SHALL COMPLY WITH APPLICABLE CODES, ORDINANCES, RULES, REGULATIONS AND LAWS OF LOCAL, MUNICIPAL, STATE OR FEDERAL AUTHORITIES HAVING JURISDICTION OVER THE PROJECT. ALL REQUIRED PERMITS OF A TEMPORARY NATURE SHALL BE OBTAINED FOR CONSTRUCTION OPERATIONS BY THE CONTRACTOR.
3. GRUBBING SHALL CONSIST OF COMPLETELY REMOVING ROOTS, STUMPS, TRASH AND OTHER DEBRIS FROM ALL GRADED AREAS SO THAT TOPSOIL IS FREE OF ROOTS AND DEBRIS. TOPSOIL IS TO BE LEFT SUFFICIENTLY CLEAN SO THAT FURTHER PICKING AND RAKING WILL NOT BE REQUIRED.
4. ALL STUMPS, ROOTS, FOUNDATIONS AND PLANKING EMBEDDED IN THE GROUND SHALL BE REMOVED AND DISPOSED OF. PILING AND BUTTS OF UTILITY POLES SHALL BE REMOVED TO A MINIMUM DEPTH OF TWO FEET BELOW THE LIMITS OF EXCAVATION FOR STRUCTURES, TRENCHES AND ROADWAYS OR TWO FEET BELOW FINISH GRADE, WHICHEVER IS LOWER.
5. SURFACE ROCKS AND BOULDERS SHALL BE GRUBBED FROM THE SOIL AND REMOVED FROM THE SITE IF NOT SUITABLE AS RIP RAP.
6. ANY WORK PERTAINING TO UTILITY POLES SHALL COMPLY WITH THE REQUIREMENTS OF THE APPROPRIATE UTILITY.
7. THE DEBRIS RESULTING FROM THE CLEARING AND GRUBBING OPERATION SHALL BE HAULED TO A DISPOSAL SITE SECURED BY THE CONTRACTOR AND SHALL BE DISPOSED OF IN ACCORDANCE WITH ALL REQUIREMENTS OF FEDERAL, STATE, COUNTY AND MUNICIPAL REGULATIONS. NO DEBRIS OF ANY KIND SHALL BE DEPOSITED IN ANY STREAM OR BODY OF WATER, OR IN ANY STREET OR ALLEY. NO DEBRIS SHALL BE DEPOSITED UPON ANY PRIVATE PROPERTY EXCEPT WITH WRITTEN CONSENT OF THE PROPERTY OWNER. A COPY OF WRITTEN CONSENT SHALL BE PROVIDED TO THE OWNER FOR PERMANENT RECORDS. IN NO CASE SHALL ANY MATERIAL OR DEBRIS BE LEFT ON THE PROJECT, SHOVED ONTO ABUTTING PRIVATE PROPERTIES OR BURIED ON THE PROJECT.



GA CORP# 0419099  
FL CORP# F04000002135  
P.O. Box 2830  
3998 Inner Perimeter Road  
Valdosta, GA 31604  
Telephone: 229-253-0900  
Fax: 229-253-1642  
E-mail: lea@lea-pc.com

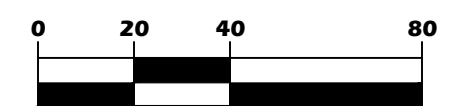
SUGAR CREEK  
SEWER REPAIR

LAND LOTS 14 OF THE  
11TH LAND DISTRICT  
LOWNDEN COUNTY - STATE  
OF GEORGIA

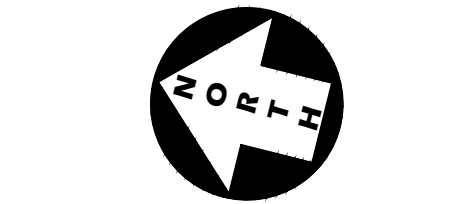
REVISIONS

DATE	DESCRIPTION

GRAPHIC SCALE



( IN FEET )  
1 INCH = 40 FEET



SCALE: 1"=40'

DESIGNED BY: MJD

CHECKED BY: MCM

SUBMITTAL DATE: 03/10/2025

JOB NO. 0026-50

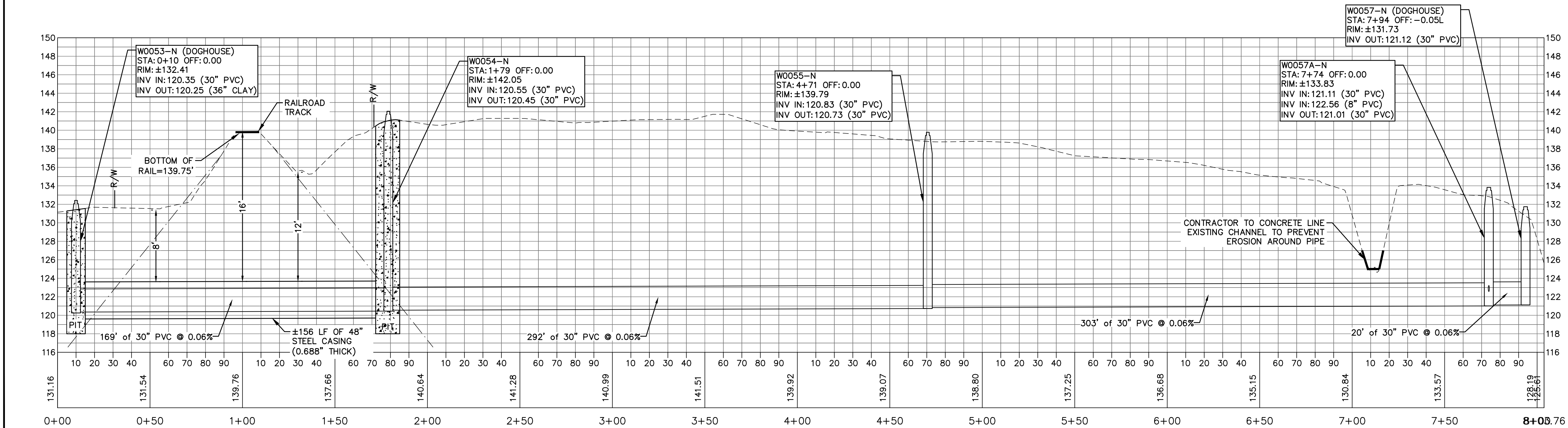
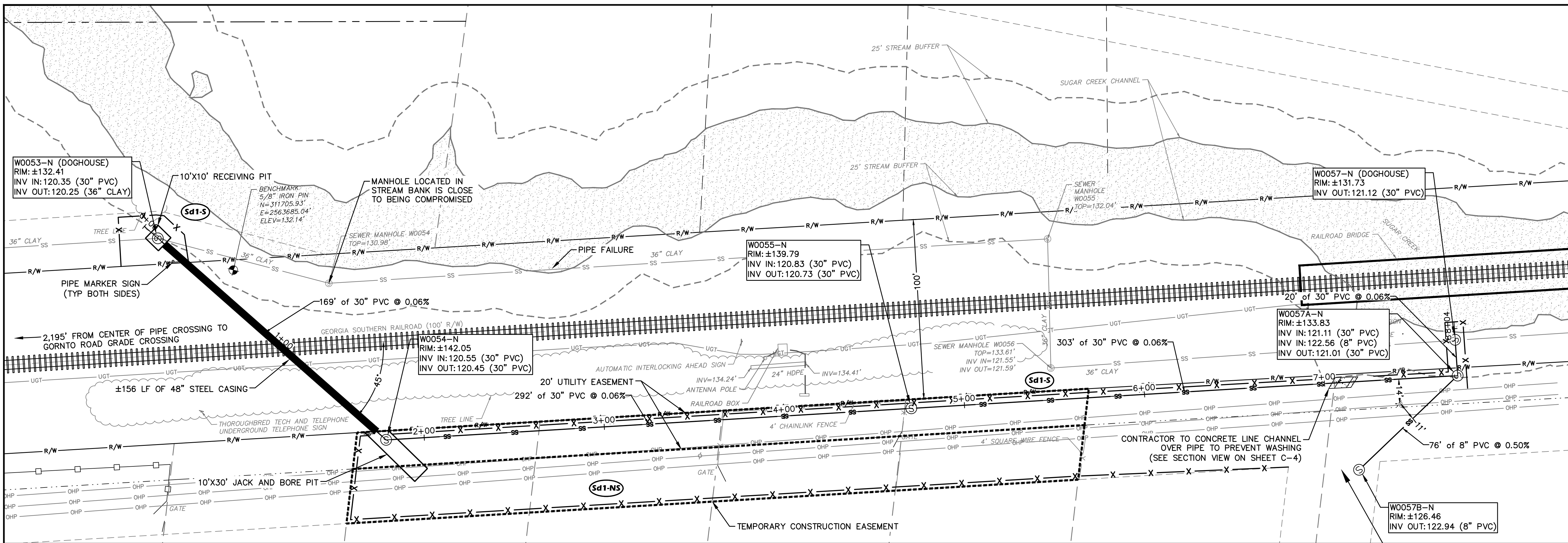
THESE DRAWINGS ARE THE PROPERTY OF THE  
ENGINEER AND MAY NOT BE REPRODUCED OR  
REUSED WITHOUT PERMISSION AND CREDIT.  
© LEA 2025

EXISTING  
CONDITIONS

C-2

2 OF 4 SHEETS





- NOTES:
1. CONTRACTOR SHALL FOLLOW ALL REQUIREMENTS OF NORFOLK SOUTHERN'S NSCE-8 SPECIFICATIONS.
  2. PIPELINE AND CROSSING TO BE INSTALLED AND MAINTAINED IN ACCORDANCE WITH LAST APPROVED AMERICAN RAILWAY ENGINEERING AND MAINTENANCE-OF-WAY ASSOCIATION SPECIFICATIONS FOR PIPELINES CONVEYING FLAMMABLE AND NON-FLAMMABLE SUBSTANCES.
  3. BLASTING IS NOT PERMITTED.



GA CORP# 0419099  
FL CORP# F04000002135  
P.O. Box 2830  
3998 Inner Perimeter Road  
Valdosta, GA 31604  
Telephone: 229-253-0900  
Fax: 229-253-1642  
E-mail: lea@lea-pc.com

## SUGAR CREEK SEWER REPAIR

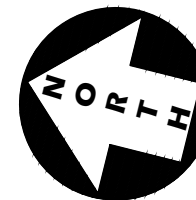
LAND LOTS 14 OF THE  
11TH LAND DISTRICT  
LOWNDES COUNTY - STATE  
OF GEORGIA

REVISIONS	
DATE	DESCRIPTION

## GRAPHIC SCALE



( IN FEET )  
1 INCH = 30 FEET (HOR)  
1 INCH = 6 FEET (VERT)



SCALE:	1"=30'
DESIGNED BY:	MJD
CHECKED BY:	MCM
SUBMITTAL DATE:	03/10/2025
JOB NO.	0026-50
THESE DRAWINGS ARE THE PROPERTY OF THE ENGINEER AND MAY NOT BE REPRODUCED OR REUSED WITHOUT PERMISSION AND CREDIT. © LEA 2025	

## PLAN & PROFILE

# C-3

3 OF 4 SHEETS



### SECTION VIEW OF CONCRETE CHANNEL

